

PART OF THE NW.1/4, OF SECTION 22, T.6N., R.3W., S.L.B. & M.

141

JORDAN HOLLOW

IN WEBER COUNTY

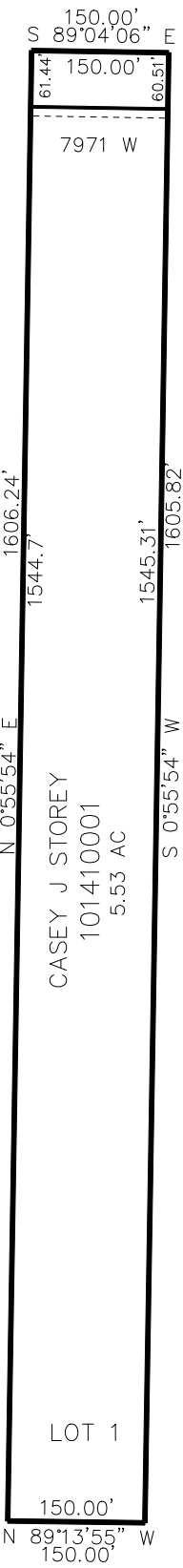
TAXING UNIT: 303

SCALE 1" = 200'

SEE PAGE 43

SEE PAGE 43

SEE PAGE 43



10' UTILITY & DRAINAGE EASEMENTS EACH
SIDE OF PROPERTY LINES AS INDICATED
BY DASHED LINES EXCEPT AS OTHERWISE
SHOWN.

SEE PAGE 43

FOR COMPLETE ENG DATA SEE
ORIGINAL DEDICATION PLAT IN
BOOK 75, PAGE 002 OF RECORDS.